

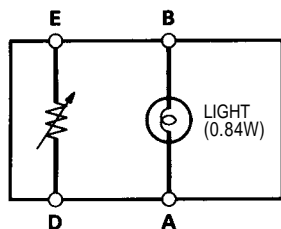
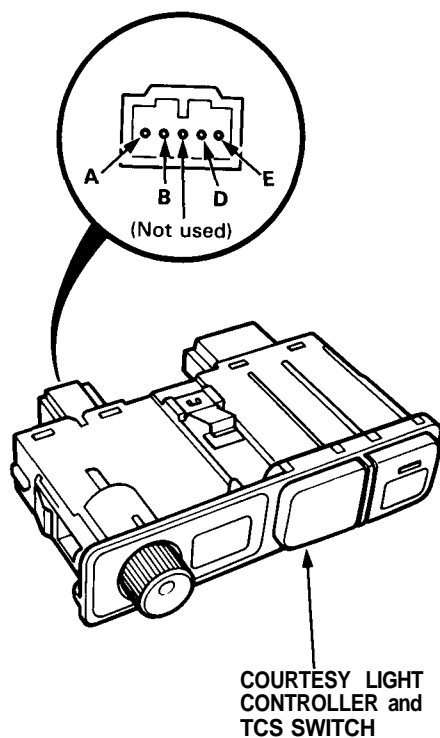
Entry Light Control System

Controller Test (LS model)

1. Remove the courtesy light controller and TCS switch from the dashboard lower cover.
2. Measure resistance between the D and E terminals while rotating the adjusting dial.

Resistance should vary from 0 Ω to 20 k Ω as the dial is rotated.

NOTE: Resistance will vary slightly with temperature.



Controller Light Bulb Replacement

1. Remove the courtesy light controller.
2. Turn the bulb 45° counterclockwise to remove the bulb.

